

# OptiBond™ Universal

Single-Component Universal Adhesive



ONE STEP.  
ONE BRAND.  
ANY PROCEDURE.

OptiBond™ Universal is here. Our one-bottle, one-coat bonding agent combines the reliability of patented OptiBond GPDM technology with the ease-of-use of a Universal solution. Exceptional bond strength to all surfaces and substrates, in any etching technique.

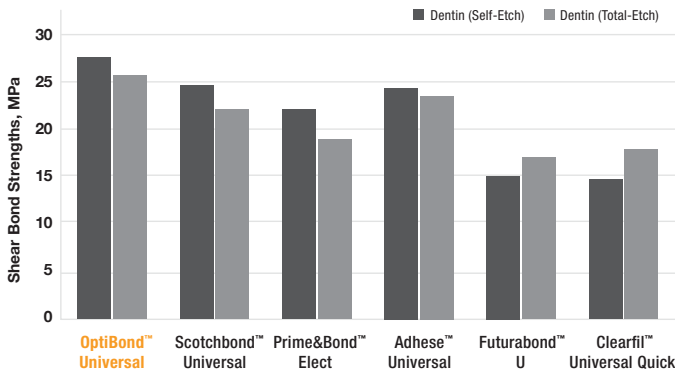
Efficacy and flexibility coming together at last.

## THE GOLD STANDARD IN ADHESION.

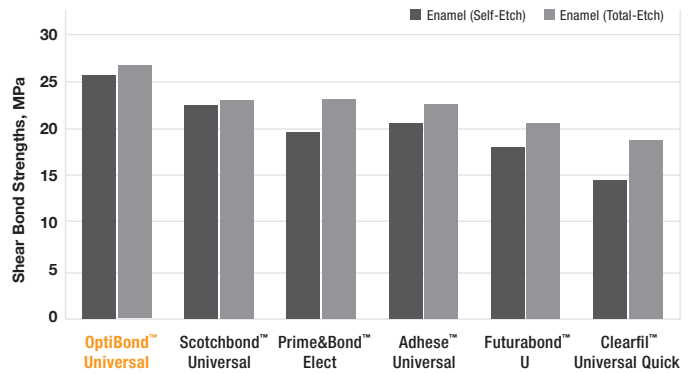


Kerr's proven OptiBond™ GPDM Monomer ensures more effective and reliable adhesion than other adhesive monomers to both the tooth structure and the resin material. It contains both acidic phosphate groups to effectively anchor the adhesive to the hydrophilic surface of the tooth and more methacrylate functional groups than other adhesive monomers (i.e. MDP) for a more effective interface with the hydrophobic resin. This creates a better compatibility with both substrates and an overall higher bond strength.

### Shear Bond Strengths of Universal Adhesive to Dentin



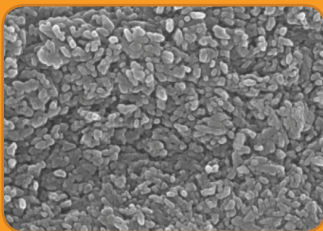
### Shear Bond Strengths of Universal Adhesive to Enamel



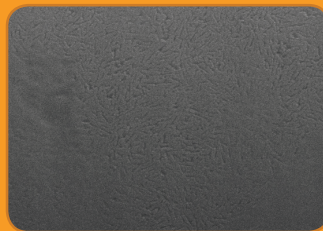
■ Kerr OptiBond™ Universal yields outstanding bond strength on both dentin and enamel, creating maximum flexibility with outstanding results under different etching techniques.

## SIMPLICITY WITH NO COMPROMISE.

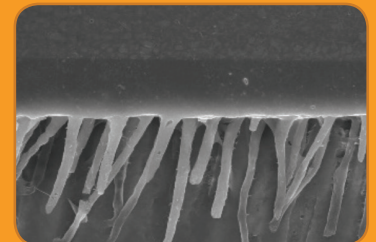
OptiBond™ Universal technology delivers excellent penetration into dentinal tubules, ensuring extraordinary bond strength and protection against microleakage and post-op sensitivity, with an application time of 30 seconds. Its unique nanoetching capability delivers more effective enamel etching than other single-component adhesives, creating a deeper etched surface for higher micro-mechanical retention, and therefore higher bond strength.



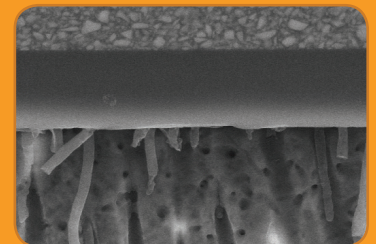
Uncut enamel 50,000x – OptiBond Universal



Uncut enamel 50,000x – leading competitor



Dentine tubules 2,000x – OptiBond Universal



Dentine tubules 2,000x – leading competitor

# ONE TECHNOLOGY, IT'S ALL YOU NEED.

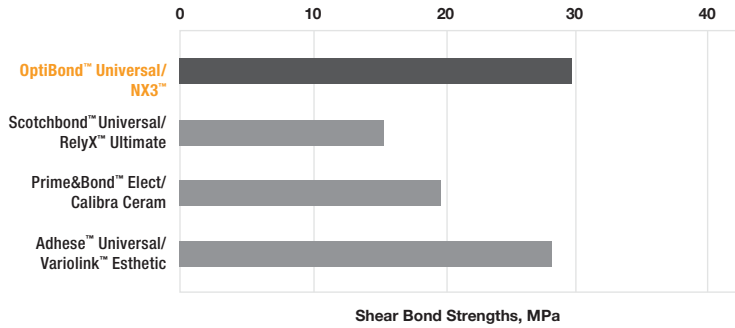


Ternary Solvent System

Kerr's patented formula is enriched with our **GPDM Monomer** and novel **Ternary Solvent System**, effectively etching the enamel while promoting the priming and sealing of dentin. Collectively, this results in a more reliable and less sensitive technique.

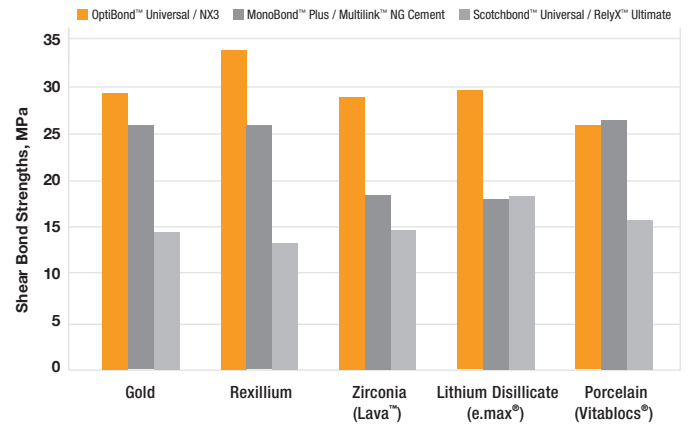
- **WATER** enhances etching power and wetting ability, facilitating penetration of adhesive in dentinal tubules
- **ACETONE** enhances shelf-life stability and increases acidity and etching during application due to its quick evaporation
- **ETHANOL** facilitates the formation of a homogeneous adhesive layer, resulting in a less technique sensitive application

## Indirect Bond Strength to Dentin (Bond Compatibility)



- Using Kerr OptiBond™ Universal/NX3™ Cement together provides enhanced bond compatibility and therefore outstanding indirect bond strength to dentin.

## Indirect Bond Strength to Various Dental Substrates



- The combination of Kerr OptiBond™ Universal/NX3™ Cement yields outstanding indirect bond strength to various dental substrates, without a separate ceramic or metal primer.

## OptiBond™ Universal

Single-Component Universal Adhesive

## ALL ETCHING TECHNIQUES IN ONE BOTTLE.

Reconstructing the tooth structure involves different substrates with different peculiarity and challenges. OptiBond™ Universal offers the possibility to rely on proven technology for different substrates and techniques, from Total Etch to Self-Etch and Selective Etch in just one bottle.



# See How Harmonize™ and OptiBond™ Universal Deliver Esthetic Restorative Solutions



**Case 1** - Dr. Scott Coleman completes a class IV in tooth #8 to restore the incisal, distal corner. A selective etch technique was used with OptiBond™ Universal and cured with the Demi™ Ultra curing light. A layer of Harmonize™ dentin shade A3 was applied lingually and cured, followed by Harmonize™ enamel shade A2 with additional curing.



**Case 2** - Dr. Scott Coleman restores multiple teeth with Harmonize™, using a total etch technique with OptiBond™ Universal followed by Harmonize™ dentin shade A1 followed by enamel Translucent Blue.

*“In a survey of 100 dentists, 100% reported no post-operative sensitivity upon follow-up.\*”*



**Case 3** - Dr. Drew Ballard starts with a dark dentin shade followed by an enamel shade using Harmonize™ and OptiBond Universal.



## ORDERING INFORMATION

- |       |   |
|-------|---|
| 36517 | OptiBond™ Universal Bottle Kit          |
| 36518 | OptiBond™ Universal Unidose (100 Pack)  |
| 36519 | OptiBond™ Universal Bottle Refill       |
| 26909 | Gel Etchant Dispensing Tips (pkg of 30) |
| 31297 | Gel Etchant Refill Pack                 |
| <hr/> |   |
| 36440 | Harmonize™ A1E Unidose                  |
| 36441 | Harmonize™ A2E Unidose                  |
| 36442 | Harmonize™ A3E Unidose                  |
| 36432 | Harmonize™ A1D Unidose                  |
| 36433 | Harmonize™ A2D Unidose                  |
| 36434 | Harmonize™ A3D Unidose                  |
| 36414 | Harmonize™ Translucent Clear Syringe    |

Visit [KerrDental.com](http://KerrDental.com) for additional shades and delivery system.

**KAVO** **Kerr**

**PREFERRED**  
LOYALTY PROGRAM

**BUY NOW. EARN REWARD POINTS.**  
**SIGN UP AT [KAVOKERRPREFERRED.COM](http://KAVOKERRPREFERRED.COM)**